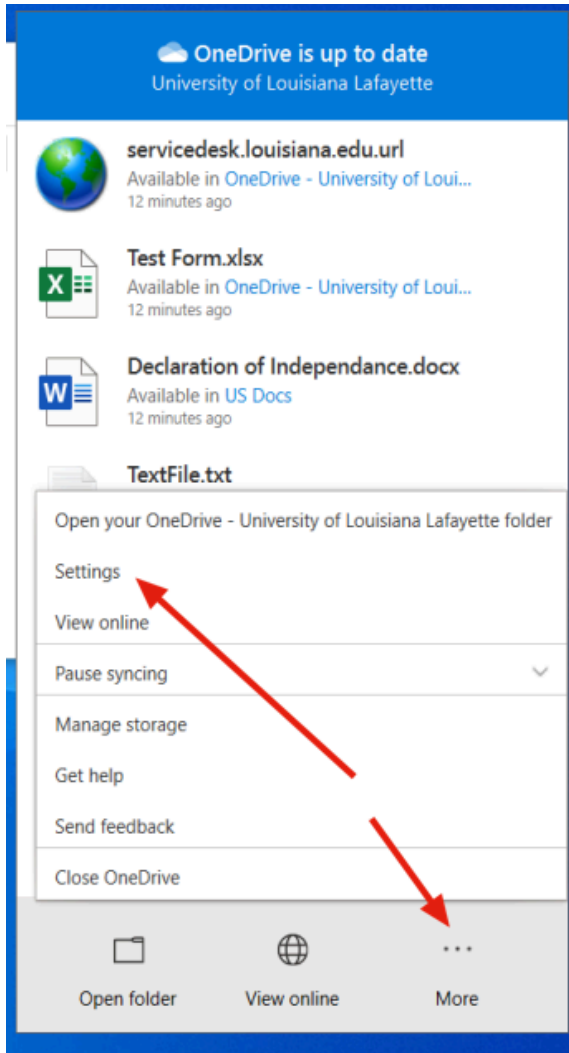


For those who used OneDrive before the August Conversion:

You need to move your files from the old account to the new one. The best and easiest way to do that is to sign into your old & new accounts on your Windows PC:

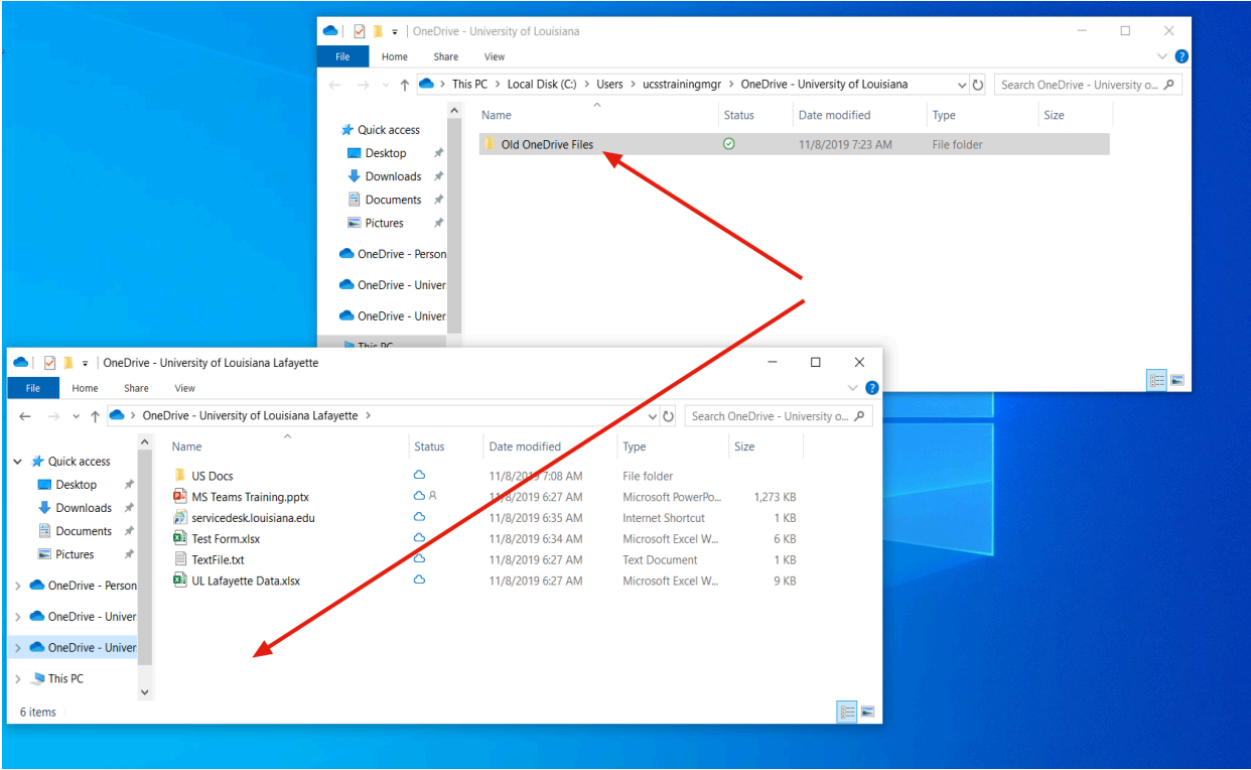


Once you select SETTINGS, you can add another account. Add ULID@win.louisiana.edu and your old files from OneDrive will sync. Copy from the old folder to the new.

You will now have two account icons:



Open each folder and drag from the old to the new and let it sync:



Once they sync, then you are done!